

**Model: ENA 90-0.2**  
Accuracy Class 0.2S

### General Features

In our first product, we offer an Electrical Parameters numeric Analyzer for monitoring, measurement, registering, analyzing and managing of all parameters of the electrical distribution networks in any plants, with various functions and a user friendly HMI as following:

Applicable as 0.2s class Energy meter based on IEC 62053-22,23 one phase and three phase Export/import (covering four quadrant) 3 or 4 wire

Applicable as a precision measuring center in electrical distribution systems such as substations power plants, cement plant etc for measuring voltage, current, active and reactive power, cosfi, frequency, current and voltage unbalancy.

Color LCD with high resolution (320x240)

P t	- 583.0	W
P1	- 582.2	W
P2	0.062	W
P3	- 0.317	W

Ability to define different pages for measured parameters based as special order

V t	87.09	V
V1	I t 1.742	A
V2	I1 5.172	A
V3	I2 0.026	A
	I3 0.026	A

Measuring RMS values of voltage and current with high accuracy of 0.2 class based on IEC standard

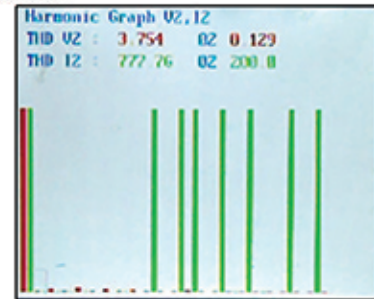
Registering Max/Min/Average of Active power Export / Import

Max Demand Exp	51.42
Max Demand Exp	4.939K
Max Demand Imp	-583.4

Also Registering of Min/Max of all parameters every one minutes for 10 years and saving in internal memory

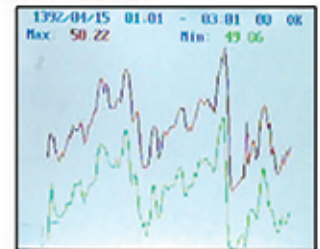


Measurement of harmonic content of voltage and current up to 23 th harmonic and saving in case of occurring disturbance.



Also calculation of THD/OHD/EHD of current and voltage and crest factor for voltage and Kfac for current.

Visualization of voltage and current wave forms as three phase with three different colors.



Ability to register fault and disturbance and define limit band for fault for all parameters.

Up to 8 tariffs is definable for management of energy from device HMI and by software from computer.

Time	03 : 22 : 29
Date	1392 / 04 / 15

Built in accurate clock and calendar.(persian/georgian) with settable day light saving and setting from remote.

possibility to send all measured parameters on RS485 or to a LAN network for reading from remote by MODBUS RTU and TCP.

Equiped with USB port for transferring and saving data in personal computer.

equiped with digital input and output and also analogue output based on request.